

## Intervenants/Speakers :

Danielle Blondel, Marlène Dreux, Pavel Kovarik, Hélène Bierne, Jonathan Howard, Maria M Mota, Florence Margottin-Goguet, Nicolas Manel, Michaela Muller-Trutwin, Frédéric Rieux-Laucat, Matthieu Giraud, Jean-Luc Imler

## Lieu/Place :

Amphithéâtre Luton, Faculté de Médecine,  
24 rue du Faubourg Saint-Jacques, 75014 Paris  
Métro Saint-Jacques – RER Port-Royal – Bus 38, 83, 91

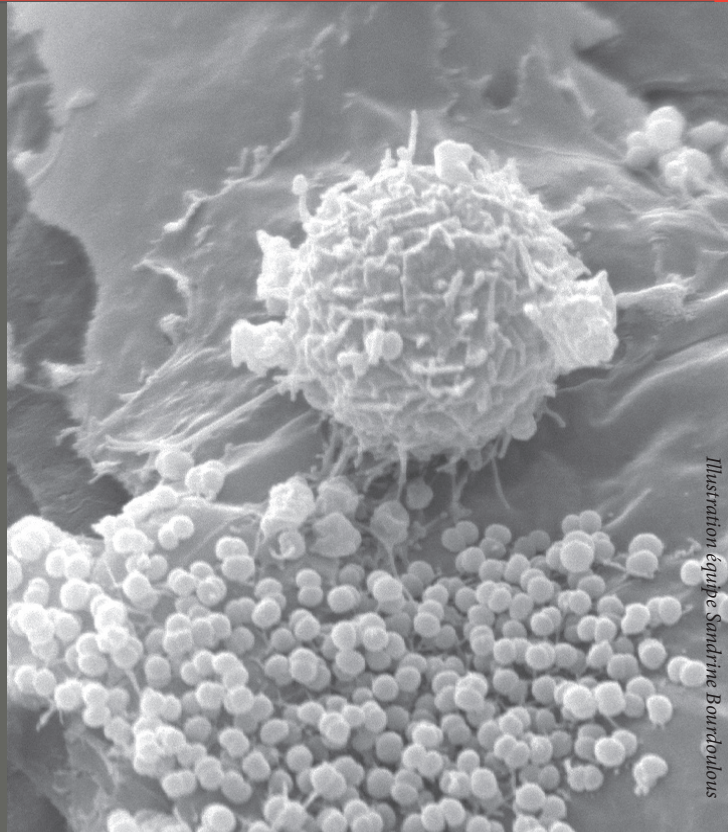


Illustration équipe Sandrine Bourdoulous

Email : [journee-dreyfus.u1016@inserm.fr](mailto:journee-dreyfus.u1016@inserm.fr)  
Inscription en ligne/registration portal : [www.institutcochin.fr](http://www.institutcochin.fr)  
Date limite/deadline : 13 septembre 2015  
Postdoctorants-Researchers : 80€  
Doctorants/PhD students : 40€  
Personnel Institut Cochin (chercheurs, doctorants, ITA) : 15€



Accéder à la page web  
Go to the web page

Avec la participation financière de



  
institut **cochin**  
CENTRE DE RECHERCHE

21  
septembre  
2015



Ajouter la date dans votre agenda  
Add the date to your calendar

Illustration équipe Isabelle Tardieux

32<sup>e</sup> Journée Institut Cochin - JC Dreyfus - Paris, France

Immunité intracellulaire et la  
détection des pathogènes  
*Intracellular immunity and the  
sensing of pathogens*

Comité Scientifique/Scientific Committee: Florence Margottin-Goguet & Cecilia Ramirez



# Programme

# Program

08h55 Introduction of the day by  
Pierre-Olivier Couraud, director of Institut Cochin

## Intracellular sensing: from viruses to bacteria

*Chairs: Cecilia Ramirez & Agnès Fouet*

- 09h05 Rabies virus and viral evasion of host innate immunity.  
*Danielle Blondel (Department of Virology, I2BC, Gif sur Yvette, France)*
- 09h40 Antiviral state by plasmacytoid dendritic cells: a flavor of flavivirus infected cells  
*Marlène Dreux (Department of Human Virology, Lyon)*
- 10h15 Type I interferon signaling in streptococcal infections: A balancing act  
*Pavel Kovarik (Max F. Perutz laboratories, Vienna, Autriche)*

*10h50 - Break*

## Intracellular sensing: from bacteria to parasites

*Chairs: Isabelle Tardieux & Sandrine Bourdoulous*

- 11h05 How bacteria tune interferon responses by playing with chromatin  
*Hélène Bierne (Institut Micalis, INRA, Jouy-en-Josas, France)*
- 11h40 Innate resistance to *Toxoplasma Gondii*  
*Jonathan Howard (Instituto Gulbenkian de Ciência, Oeiras, Portugal)*
- 12h15 Host cell sensors for *Plasmodium*  
*Maria M Mota (Instituto de Medicina Molecular, Lisbonne)*

*12h50 - Lunch*

## Escape from sensing with HIV?

*Chairs: Katy Janvier & Anne Hosmalin*

- 14h40 Molecular battle between HIV and the host cell  
*Florence Margottin-Goguet (Institut Cochin, Paris, France)*
- 15h15 Intersections of viral replication and innate immune sensing in HIV-1 infection  
*Nicolas Manel (Institut Curie, Paris, France)*
- 15h50 Innate immunity in the control of HIV/AIDS  
*Michaela Muller-Trutwin (Institut Pasteur, Paris, France)*

*16h25 - Break*

## Immune diseases: when the sensors are defective

*Chairs: Nicolas Manel & Matthieu Giraud*

- 16h40 An intereSTING mutation in a human autoimmune and autoinflammatory syndrome  
*Frédéric Rieux-Laucat (Institut Imagine, Paris, France)*
- 17h15 Post-transcriptional control of the AIRE-dependent autoantigens in the thymus  
*Matthieu Giraud (Institut Cochin, Paris, France)*

## A story from the *Drosophila* point of view

- 17h50 Antiviral immunity in *Drosophila*: from sensing to immunopathology  
*Jean-Luc Imler (Institute of Molecular and Cellular Biology (IBMC), Strasbourg, France)*
- 18h25 The End